

## What will be collected?

Household trash must fit the size, weight and quantity restrictions below:

- Four (4) items on each collection day. This means up to four cans, bags or bundles.
- Each can, bag or bundle must be **less than 40 pounds**.
- Bundles must be less than 4 feet in length, less than 18" in diameter and less than 40 pounds.
- For bulk pickup information, see back panel.

## What will NOT be collected?

- Liquids such as paint, cooking oil, chemicals and motor oil (which can leak onto streets).
- Hazardous, toxic or flammable materials: asbestos, ammunition, explosives, compressed gas tanks, dead animals, firearms, medical waste, etc.
- Car parts: tires, wheels, batteries, etc.
- Landscape debris: dirt, rocks, stumps, sod, etc.
- Construction debris: concrete, drywall, lumber, carpet, etc.
- Pallets, wooden picnic tables, and wooden playhouses/swing sets
- Mirrors/plate glass
- Rechargeable batteries: laptop, cell phone, etc.
- Electronics including computer monitors, TVs, motorized toys, chairs with electric plugs, etc.
- Cart-type containers larger than 40-gallons containing loose trash will not be serviced.
- Yard trimmings may not be put out as trash during yard trim season in areas that receive curbside yard trim collection.
- **Trash placed in County-provided recycling containers will not be serviced.**

## How to prepare trash:

Additional recycling and disposal options are available at the ARL Resident's Convenience Center. Details at **HowardCountyMD.gov/ARL** or 410-313-6444.

Residents may utilize reusable containers or disposable bags.

### Reusable containers must be:

- Made of metal or tough plastic and equipped with handles and watertight, well-fitting lids.
- Maximum 40 gallon capacity. If containers are larger than 40 gallons, each bag inside is counted as one item.
- Cart-type containers larger than 40 gallons should not be used.

Reusable containers may be required in townhome communities or areas where previous sanitation or rodent problems have been identified.

### Disposable trash bags must be:

- Heavy gauge plastic that can be picked up and carried without tearing.
- Securely tied at the top to prevent spillage.



**Note:** The clean-up of trash or recycling, especially in grouping locations, that is spilled and/or spread by animals or wind is the responsibility of the residents.

## Where to place trash:

- Residents of single family homes must place trash to be collected within five (5) feet of the nearest public road fronting the home.
- Do not block mailboxes, cars or fire hydrants. Place items on the opposite side of the driveway, if possible.
- Some communities are required to group items in designated areas accessible to the collectors, such as the curb end of grass islands or at the end of parking areas.

## When are collections?

- Trash is collected on your scheduled collection day between the hours of 6 a.m. and 7 p.m. Pickup times may vary week to week.
- Items must be placed out after 6 p.m. the night before collection or before 6 a.m. the day of collection. Do not set items out days in advance of your collection day.
- **Contractors will not return to collect items set out after the truck has serviced the area.**
- Collections missed due to road closings will be made the next day, if possible.



## Holiday Slide Schedule:

There will be NO curbside collection on the following holidays.

New Year's Day	Labor Day
Memorial Day	Thanksgiving Day
Independence Day	Christmas Day

Recycling, trash and yard trim collection on or after these holidays will slide and be made the next day. Visit [HowardCountyRecycles.org](http://HowardCountyRecycles.org) for handy charts.

## Inclement Weather:

Every effort will be made to continue to provide scheduled collections. Collections may be cancelled (or postponed) due to inclement weather.

Visit [HowardCountyRecycles.org](http://HowardCountyRecycles.org) or call 410-313-6444 for cancellation and make-up information.

## Tips to reduce your trash

- Recycle unlimited quantities of acceptable items on your recycling day. For a list of acceptable items visit [HowardCountyRecycles.org](http://HowardCountyRecycles.org).
- Grasscycle by leaving grass clippings on your lawn. This means less work for you and provides free fertilizer for your lawn.
- Compost grass, leaves, yard trimmings and select food scraps. Use the finished product to amend your lawn, flower beds and vegetable gardens. **Free compost bins** are available to Howard County residents at 6751 Columbia Gateway Dr. Suite 514 and Alpha Ridge Landfill.
- Donate usable items to charities such as Goodwill, Salvation Army, etc. to keep reusable items out of the trash.

## Bulk Items and Scrap Metal:

Pickup of **bulk trash items must be scheduled** by calling 410-313-6444 or visiting [HowardCountyBulkPickup.org](http://HowardCountyBulkPickup.org).

Bulk trash items such as mattresses, box springs and furniture will be collected on your regular trash day. After scheduling, place these items with your trash within 5 feet of the County roadway. A maximum of 4 bulk trash items will be collected. Items must be able to be lifted by two collection crew members (larger/unaccepted items will be tagged and left for the resident's disposal).

Pickup of **scrap metal items must be scheduled** by calling 410-313-6444. After scheduling, you will be given your collection day. Restrictions may apply.

### Items NOT Accepted

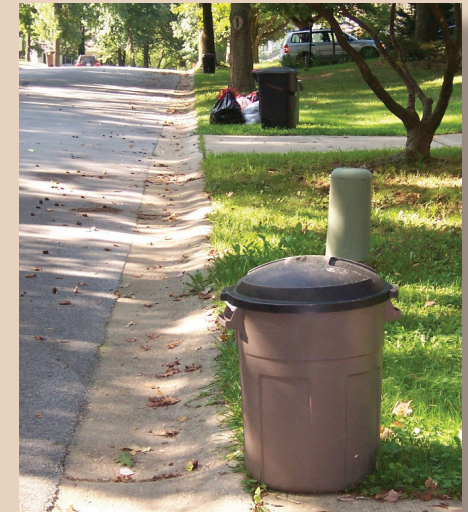
- |                                    |                                  |
|------------------------------------|----------------------------------|
| • Batteries*                       | • Medical waste                  |
| • Carpets/Rugs                     | • Mirrors/plate glass            |
| • Chairs with electric plugs       | • Motorized toys*                |
| • Compressed gas tanks*            | • Pallets*                       |
| • Computer monitors*               | • Picnic tables (wooden)         |
| • Construction & demolition debris | • Playhouses/swing sets (wooden) |
| • Drum containers/fuel & oil tanks | • Sofa beds                      |
|                                    | • Stumps & logs*                 |
|                                    | • Tires*                         |
|                                    | • TVs*                           |

\*These items can be recycled at Alpha Ridge Landfill (2350 Marriottsville Road, Marriottsville).



# Trash

## Your Guide to Howard County's Trash Service



Many items we often consider to be trash can be recycled, reused or donated. Consider reuse/recycle options first.

Bureau of Environmental Services  
6751 Columbia Gateway Drive  
Suite 514  
Columbia, MD 21046  
410-313-6444

[www.HowardCountyRecycles.org](http://www.HowardCountyRecycles.org)